

# Special Features for “Film Processing & Inspection”

※As of April 15, 2019. In random order. Exhibitors and products may differ from the actual ones at the show.



**IPA series**

[World's First Technology]  
The camera position can be any setting, and supports the diagonal, vertical and horizontal position of the mark.

FUJII SHOKO MACHINERY CO., LTD.



水蒸気  
バリア

$5 \times 10^{-5} \sim 5$   
g/m<sup>2</sup>/day

**AQUATRAN 3**

Ultra-high barrier materials may have long test times, but these tests don't have to stress your labor resources.

HITACHI HIGH-TECH SCIENCE CORP.



**Laminator**

Laminator with Automatic work transfer & film peeling system. It adopts a 6-axis articulated robot. Demonstrate will be available in the booth.

SANKYO CO., LTD.



**Easy Inspect**

[New Product/Technology]  
In-line inspection for high-quality films. Reliable detection of smallest defects.

MEDIKEN INC.



**KAMATA Clean Booth**

Fully custom made design using original aluminum frame. We pursue sealing and safety and adopt lightweight aluminum frame as exclusive frame.

KAMATA INDUSTRY CO., LTD.



**Cutting Machine:  
CX-310A**

[World's First Technology]  
Cutting machine for nonwoven fabrics, films, and tape adhesives.

CORTEC



**Surface Inspection:  
MaxEye. ST series**

[New Product/Technology]  
A plain surface inspection system using a newly developed camera.

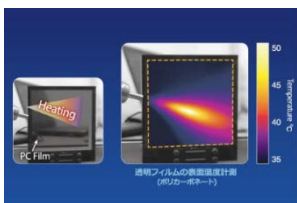
FUTEC INC.



**Measurement for  
Rolls Parallelism**

Measuring the positional relationship of each roll quickly and accurately. Demonstrate will be available in the booth.

TLV CO., LTD./TTS CO., LTD.



**Film Temperature Distribution  
Evaluation System**

It can evaluate the temperature distribution of film by constructing special optical system for high speed and high sensitivity infrared camera.

PHOTRON LIMITED



**Coater Machine**

It can suitably adjust the coating requirements automatically by monitoring the coating film thickness, coating weight, and coating width.

TORAY ENGINEERING CO., LTD.



**ROTARY LINE CUTTER**

Cutter for trimming scraps. Demonstrate will be available in the booth.

TATSUMI AIR ENGINEERING LTD.



**Spectrophotometer**

[New Product/Technology]  
Highest level of repeatability with inter-instrument agreement, usability.

KONICA MINOLTA JAPAN, INC.

And more related products available at the show!

▶ [Click here for Visitor Ticket](#) ◀